

OPEN ACCESS

R&D towards the CMS RPC Phase-2 upgrade

To cite this article: A. Fagot *et al* 2016 *JINST* 11 C09017

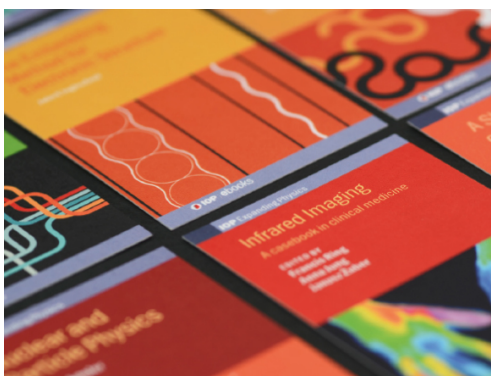
View the [article online](#) for updates and enhancements.

Related content

- [Studies on the upgrade of the muon system in the forward region of the CMS experiment at LHC with GEMs](#)
D Abbaneo, M Abbrescia, M Abi Akl *et al*.
- [Radiation tests of real-sized prototype RPCs for the Phase-2 Upgrade of the CMS Muon System](#)
K.S. Lee, S.W. Cho, S.Y. Choi *et al*.
- [Improving of RPC for Muon System of CMS experiment](#)
E Voevodina and CMS Muon Group

Recent citations

- [RE3/1 & RE4/1 RPC chambers integration in the inner region of the forward muon spectrometer in the CMS experiment](#)
E. Voevodina *et al*
- [Improving of RPC for Muon System of CMS experiment](#)
E Voevodina and on behalf of the CMS Muon Group



IOP | ebooks™

Bringing together innovative digital publishing with leading authors from the global scientific community.

Start exploring the collection—download the first chapter of every title for free.

13TH WORKSHOP ON RESISTIVE PLATE CHAMBERS AND RELATED DETECTORS,
22–26 FEBRUARY 2016,
GHENT, BELGIUM

R&D towards the CMS RPC Phase-2 upgrade

A. Fagot,^{a,1} A. Cimmino,^a S. Crucy,^a M. Gul,^a A.A.O. Rios,^a M. Tytgat,^a N. Zaganidis,^a
S. Aly,^b Y. Assran,^b A. Radi,^b A. Sayed,^b G. Singh,^c M. Abbrescia,^d G. Iaselli,^d M. Maggi,^d
G. Pugliese,^d P. Verwilligen,^d W. Van Doninck,^e S. Colafranceschi,^f A. Sharma,^f
L. Benussi,^g S. Bianco,^g D. Piccolo,^g F. Primavera,^g V. Bhatnagar,^h R. Kumari,^h A. Mehta,^h
J. Singh,^h A. Ahmad,ⁱ W. Ahmed,ⁱ M.I. Asghar,ⁱ I.M. Awan,ⁱ H.R. Hoorani,ⁱ S. Muhammad,ⁱ
M.A. Shah,ⁱ H. Shahzad,ⁱ S.W. Cho,^j S.Y. Choi,^j B. Hong,^j M.H. Kang,^j K.S. Lee,^j J.H. Lim,^j
S.K. Park,^j M.S. Kim,^k M. Gouzevitch,^l G. Grenier,^l F. Lagarde,^l I.B. Laktineh,^l
S. Carpinteyro Bernardino,^m C. Uribe Estrada,^m I. Pedraza,^m S. Carrillo Moreno,ⁿ
F. Vazquez Valencia,ⁿ L.M. Pant,^o S. Buontempo,^p N. Cavallo,^p M. Esposito,^p F. Fabozzi,^p
G. Lanza,^p I. Orso,^p L. Lista,^p S. Meola,^p M. Merola,^p P. Paolucci,^p F. Thyssen,^p
A. Braghieri,^q A. Magnani,^q P. Montagna,^q C. Riccardi,^q P. Salvini,^q I. Vai,^q P. Vitulo,^q
Y. Ban,^r S.J. Qian,^r M. Choi,^s Y. Choi,^t J. Goh,^t D. Kim,^t A. Aleksandrov,^u R. Hadjiiska,^u
P. Iaydjiev,^u M. Rodozov,^u S. Stoykova,^u G. Sultanov,^u M. Vutova,^u A. Dimitrov,^v L. Litov,^v
B. Pavlov,^v P. Petkov,^v I. Bagaturia,^w D. Lomidze,^w C. Avila,^x A. Cabrera,^x J.C. Sanabria,^x
I. Crotty^y and J. Vaitkus^z on behalf of CMS collaboration

^aGhent university, Dept. of Physics and Astronomy,
Proeftuinstraat 86, Ghent, B-9000 Belgium

^bEgyptian Network for High Energy Physics, Academy of Scientific Research and Technology,
101 Kasr El-Einy St., Cairo, Egypt

^cChulalongkorn University, Department of Physics, Faculty of Science,
Payathai Road, Phatumwan, Bangkok, 10330 Thailand

^dINFN, Sezione di Bari,
Via Orabona 4, Bari, IT-70126 Italy

^eVrije Universiteit Brussel,
Boulevard de la Plaine 2, Ixelles, 1050 Belgium

^fPhysics Department CERN,
Geneva 23, CH-1211 Switzerland

¹Corresponding author.



- ^sINFN, Laboratori Nazionali di Frascati (LNF),
Via Enrico Fermi 40, Frascati, IT-00044 Italy
- ^hDepartment of Physics, Panjab University,
Chandigarh Mandir, 160 014 India
- ⁱNational Centre for Physics, Quaid-i-Azam University,
Islamabad, Pakistan
- ^jKorea University, Department of Physics,
145 Anam-ro, Seongbuk-gu, Seoul, 02841 Republic of Korea
- ^kKyungpook National University,
80 Daehak-ro, Buk-gu, Daegu, 41566 Republic of Korea
- ^lUniversite de Lyon, Universite Claude Bernard Lyon 1, CNRS-IN2P3,
Institut de Physique Nucleaire de Lyon, Villeurbanne, France
- ^mBenemerita Universidad Autonoma de Puebla,
Puebla, Mexico
- ⁿUniversidad Iberoamericana,
Mexico City, Mexico
- ^oNuclear Physics Division Bhabha Atomic Research Centre,
Mumbai, 400 085 India
- ^pINFN, Sezione di Napoli, Complesso Univ. Monte S. Angelo,
Via Cintia, Napoli, IT-80126 Italy
- ^qINFN, Sezione di Pavia,
Via Bassi 6, Pavia, Italy
- ^rSchool of Physics, Peking University,
Beijing, 100871 China
- ^sUniversity of Seoul,
163 Seoulsiripdae-ro, Dongdaemun-gu, Seoul, Republic of Korea
- ^tSungkyunkwan University,
2066 Seobu-ro, Jangan-gu, Suwon-si, Gyeonggi-do, Republic of Korea
- ^uBulgarian Academy of Sciences, Inst. for Nucl. Res. and Nucl. Energy,
Tzarigradsko shaussee Boulevard 72, Sofia, BG-1784 Bulgaria
- ^vFaculty of Physics, University of Sofia,
5, James Burchier Boulevard, Sofia, BG-1164 Bulgaria
- ^wTbilisi University,
1 Ilia Chavchavadze Ave, Tbilisi, 0179 Georgia
- ^xUniversidad de Los Andes,
Apartado Aereo 4976, Carrera 1E, no. 18A 10, Bogotá, Colombia
- ^yDept. of Physics, Wisconsin University,
Madison, WI, 53706 United States
- ^zVilnius University,
Vilnius, Lithuania

E-mail: alexis.fagot@ugent.be

ABSTRACT: The high pseudo-rapidity region of the CMS muon system is covered by Cathode Strip Chambers (CSC) only and lacks redundant coverage despite the fact that it is a challenging region for muons in terms of backgrounds and momentum resolution. In order to maintain good efficiency for the muon trigger in this region additional RPCs are planned to be installed in the two outermost stations at low angle named RE3/1 and RE4/1. These stations will use RPCs with finer granularity and good timing resolution to mitigate background effects and to increase the redundancy of the system.

KEYWORDS: Front-end electronics for detector readout; Materials for gaseous detectors; Resistive-plate chambers; Particle tracking detectors (Gaseous detectors)

ARXIV EPRINT: [1606.04291](https://arxiv.org/abs/1606.04291)

Contents

1	Introduction	1
2	Irradiation tests at the CERN GIF++	3
3	Investigated forward RPC technologies	4
3.1	Electrode materials	4
3.2	Front-end electronics	5
3.3	Chamber design	5
4	Conclusion	8

1 Introduction

After the more than two years lasting first Long Shutdown (LS1), the Large Hadron Collider (LHC) delivered its very first Run-II proton-proton collisions early 2015. LS1 gave the opportunity to the LHC and its experiments to undergo upgrades. The accelerator is now providing collisions at center-of-mass energy of 13 TeV and bunch crossing rate of 40 MHz, with a peak luminosity exceeding its design value. During the first and upcoming second LHC Long Shutdown, the Compact Muon Solenoid (CMS) detector is also undergoing a number of upgrades to maintain a high system performance [1].

From the LHC Phase-2 or High-Luminosity (HL-LHC) period onwards, i.e., past the third LHC Long Shutdown (LS3), the performance degradation due to integrated radiation as well as the average number of inelastic collisions per bunch crossing, or pileup, will rise substantially and become a major challenge for the LHC experiments, like CMS, that are forced to address an upgrade program for Phase-II [2]. FLUKA simulations of the expected distribution of absorbed dose in the CMS detector under HL-LHC conditions show, in figure 1, that detectors placed close to the beamline will have to withstand high irradiation, the radiation dose being of the order of a few tens of Gy.

The measurement of small production cross-section or decay branching ratio processes, such as the Higgs boson coupling to charge leptons or the $B_s \rightarrow \mu^+ \mu^-$ decay, is of major interest, and specific upgrades in the forward regions of the detector will be required to maximize the physics acceptance on the largest possible solid angle. To ensure proper trigger performance, within the present coverage, the muon system will be completed with new chambers. In figure 2, one can see that the existing Cathode Strip Chamber (CSC) modules will be completed by Gas Electron Multipliers (GEM) and Resistive Plate Chambers (RPC) in the pseudo-rapidity region $1.6 < |\eta| < 2.4$ to complete its redundancy, as originally scheduled in the CMS Technical Proposal [3].

RPCs are used by the CMS first level trigger for their good timing performances. Indeed, a very good bunch crossing identification can be obtained with the present CMS RPC system

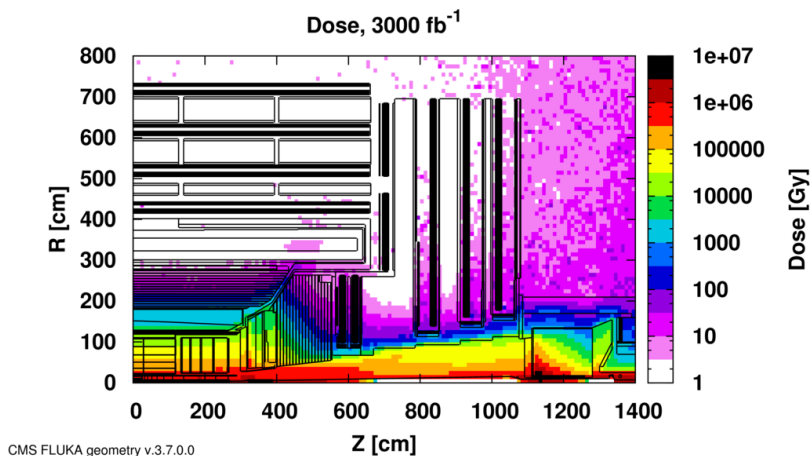


Figure 1. Absorbed dose in the CMS cavern after an integrated luminosity of 3000 fb^{-1} obtained using FLUKA. R is the transverse distance from the beamline, and Z is the distance along the beamline from the Interaction Point at $Z=0$.

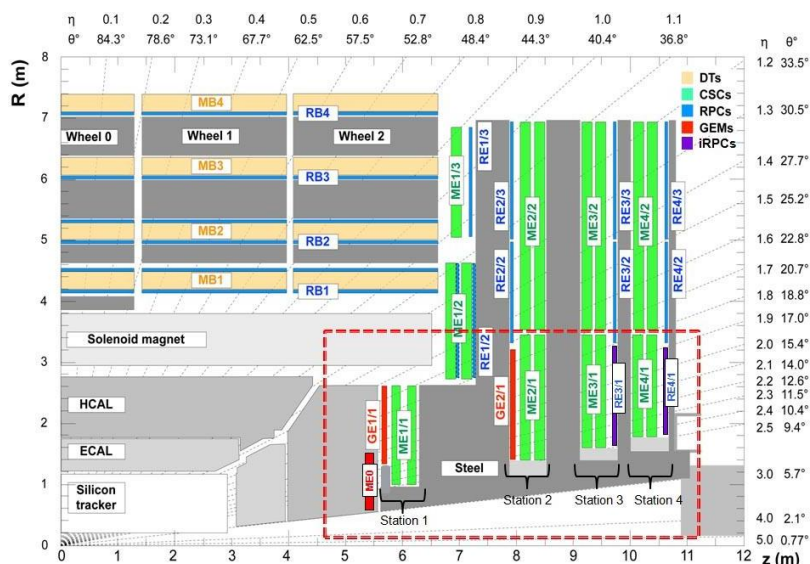


Figure 2. A quadrant of the muon system showing DT chambers (yellow), RPC (light blue), and CSC (green). The locations of new forward muon detectors for Phase-II are contained within the dashed box and indicated in red for GEM stations (ME0, GE1/1, and GE2/1) and dark blue for improved RPC stations (RE3/1 and RE4/1).

given their fast response of the order of 1 ns. In order to contribute to the precision of muon momentum measurements, muon chambers should have a spatial resolution less or comparable to the contribution of multiple scattering [1]. Most of the plausible physics is covered only considering muons with $p_T < 100 \text{ GeV}$. Thus, in order to match CMS requirements, a spatial resolution of $\mathcal{O}(\text{few mm})$ is needed for the proposed new RPC stations, as shown by the simulation in figure 3. According to preliminary designs, RE3/1 and RE4/1 readout pitch will be comprised between 3 and 6 mm, and 5 η -partitions could be considered.

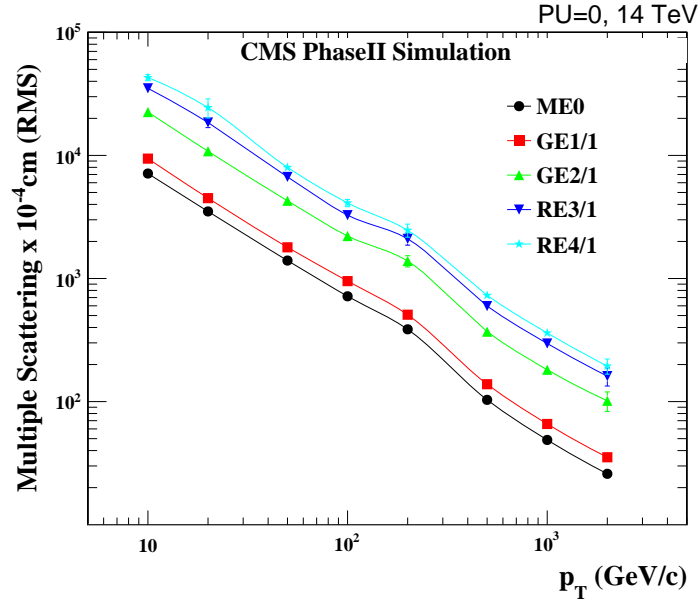


Figure 3. RMS of the multiple scattering displacement as a function of muon p_T for the proposed forward muon stations. All of the electromagnetic processes, such as bremsstrahlung and magnetic field effect, are included in the simulation.

2 Irradiation tests at the CERN GIF++

In the very forward region of CMS, i.e., close to the LHC beam line, the third endcap disk will be subjected to a total expected background rate per unit area of the order of 0.6 kHz/cm^2 , according to figure 4, requiring solutions for the new RPC stations with stable, high performance in time in a high radiation environment for the new RE3/1 and RE4/1 stations [2]. Such rate per unit area is equivalent to an integrated charge per unit area of approximately 1 C/cm^2 during the lifetime of the detectors, assuming a mean charge deposition $\langle q \rangle$ per avalanche of 20 pC and a safety factor of 2.

To ensure their robustness, CMS present muon system detectors and new R&D efforts will be irradiated and monitored. The GIF++, at CERN, is a new gamma irradiation facility to test detectors for the HL-LHC program. High energy μ beam, with momentum up to 100 GeV/c , is provided and combined with a $14 \text{ TBq } ^{137}\text{Cs}$ source. Performance of RPCs will be thoroughly tested with high radiation background. At HL-LHC, to integrate 3000 fb^{-1} at a luminosity $L = 5 \times 10^{34} \text{ cm}^2 \cdot \text{s}^{-1}$, an effective time $T_{\text{eff}} = 6 \times 10^7 \text{ s}$ is needed.

$$Q_{\text{int}}^{\text{HL-LHC}} = \langle q \rangle \cdot T_{\text{eff}} \cdot \Phi_{\text{eff}} \quad (2.1)$$

$$Q_{\text{int}}^{\text{GIF}} = \langle q \rangle \cdot T_{\text{irr}} \cdot \Phi_{\text{eff}} \cdot AF. \quad (2.2)$$

Using equations (2.1) and (2.2), and an acceleration factor $AF = 2$, an irradiation time T_{irr} of approximately 17 months will be necessary to reproduce a charge deposition similar to HL-LHC. RPC life time is dependant on the total integrated charge over time that can degrade the material and components inside the detector, and contribute to produce HF [4]. Test in GIF++ will help us understand the HF production through time in RPCs using a gas mixture composed of 95.2% $\text{C}_2\text{H}_2\text{F}_4$ (R-134a), 4.5% $i\text{C}_4\text{H}_{10}$ (isobutane) and 0.3% SF_6 as well as their overall ageing.

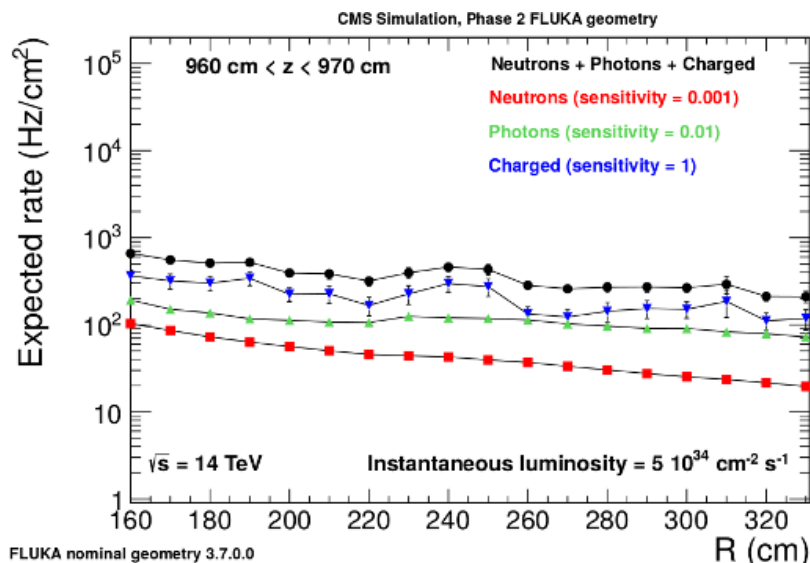


Figure 4. Particle hit rate per unit area as a function of radius at the RE3/1 station, assuming a 0.001 sensitivity to neutrons, 0.01 to photons, and 1 to charged, ionizing particles. The results are provided by FLUKA simulations.

3 Investigated forward RPC technologies

As RPCs are resistive detectors, increasing the rate capability of the new generation via a reduction of their electrode's resistivity is a first possibility to be investigated in order to accelerate the charge recombination at the level of the electrode's surface. Indeed, by reducing the resistivity the time constant of the detector is similarly affected.

A reduction of resistivity should be coupled with a reduction of mean charge deposition per avalanche to lower the influenced area per avalanche. Equipping RPCs with more sensitive front-end electronics and moving a part of the amplification to the electronics would allow to work at lower voltages. Another solution would be to improve the current CMS RPC design. For example, changing the number of electrodes or their thickness could yield a better ratio of induced signal to moving charge.

By combining these different techniques, a reduction of the voltage drop over the electrodes is expected with improvements on both rate capability and ageing of the detector.

3.1 Electrode materials

Materials that are being used in RPCs are listed into table 1. The materials presented here are the Bakelite and Low Resistive Silicate (LRS) glass considered by CMS together with other doped glass and ceramics. HPL being industrially produced offers lower costs and bigger material surfaces allowing to build wide area detectors, whereas glass and ceramics are still prototype materials produced locally at higher costs and small surfaces. Glass and ceramics have smooth surfaces naturally offering uniform electric fields and offer a tunable range of resistivity values, while Bakelite has only limited resistivity range and, with its porous surface, usually requires a linseed oil treatment.

Table 1. List of materials used for improved RPC prototypes. A resistivity range is given for Vanadate glass, SiC based ceramics, and Ferrite ceramics, for which the production process allows a fine tuning of the resistivity.

Electrode material	ρ (Ωcm)	Institutes
HPL	$0.5-1 \times 10^{10}$	INFN [5]
LRS glass	10^{10}	IPNL-LLR-Tsinghua [6, 7]
Vanadate glass	10^4 to 10^{16}	Coe College-ANL-University of Iowa [8]
SiC based ceramics	10^7 to 10^{12}	HZDR [9]
Ferrite ceramics	10^6 to 10^{13}	CSIC-USC [10]

3.2 Front-end electronics

Only changing the electrode resistivity to make RPCs faster won't help in reducing the ageing effects to ensure smooth performance over a long time period. A main contribution to the ageing is due to the amount of deposited charge per avalanche created in the gas gap that also affects the rate capability. Being able to reduce this mean charge deposition will lead to a reduction of the total integrated charge over long periods. As a consequence, the rate capability will be improved. This can be achieved via more sensitive low-noise front-end electronics.

New prototypes of front-end electronics using SiGe technology have been proposed, as can be seen in figures 5 & 6. The first figure presents a prototype of new preamplifier developed by Cardarelli and others [11]. This low-noise preamplifier can be fused into the current CMS front-end electronics ASIC as replacement of the actual preamplifier [12]. Tested on a CMS RPC, this electronics permitted a shift of the efficiency curve of 460 V to lower values corresponding to a average charge reduction from 20 pC to 3 pC [2].

Figure 6 is a block diagram of the 16-channel PETIROC ASIC developed by OMEGA [13] for Time of Flight applications. This type of electronics is now being adapted for usage with multigap RPCs with high time resolution of the order of tens of ps. The prototype, shown in figure 7, offers the possibility to use 3 detection thresholds, enabling a semi-digital readout and to read-out both strip ends. Combining both techniques, a 2-dimensional tracking of the particles would be allowed. The spatial resolution in the orthogonal direction to the strips can be believed to be of the order of 1 mm [14] for a pitch size of a few mm while in the longitudinal direction, due to the time resolution of both the detector and the electronics, the spatial resolution would be limited to the order of 1 cm or bellow as discussed by HADES collaboration [15].

3.3 Chamber design

Choosing a better performing RPC design, with optimized electrode or gas gap thickness, and various number of gaps to combine with the previously presented front-end electronics prototypes can be investigated to further reduce the mean charge deposition per avalanche as well as the charge recombination time and the related detector dead time.

A bakelite based multigap solution is currently under development at KODEL [5]. Figure 8 shows a double bi-gap HPL RPC composed of 2 bi-gap RPCs using a design similar to that of

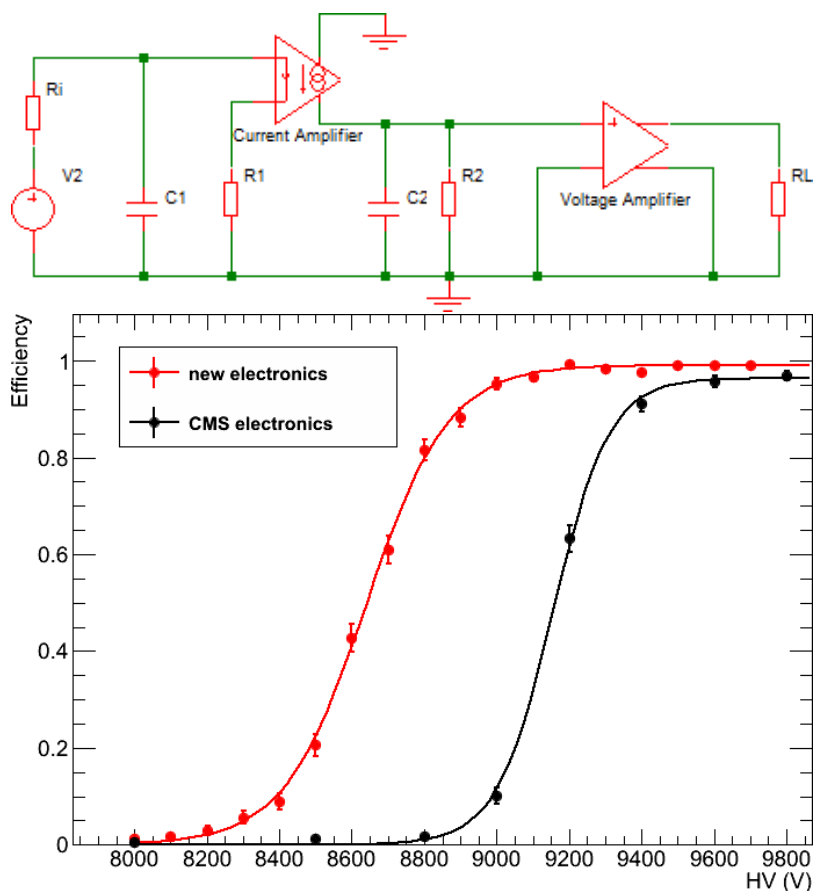


Figure 5. Top: block diagram of INFN amplifier where R_1 is the input impedance resistance. $C_1 \ll C_2$ and $R_1 \ll R_2$ are the conditions for the circuit to work properly. Bottom: efficiency plateaus for the cases of the standard CMS RPC front-end electronics and new INFN prototype electronics. A lower charge crossing the RPC gap is indicated by the shift of the plateau toward lower voltages leading to an improved rate capability of the RPC. The RPC under test was operated with 95.2% $C_2H_2F_4$ (R-134a), 4.5% iC_4H_{10} (isobutane) and 0.3% SF_6 .

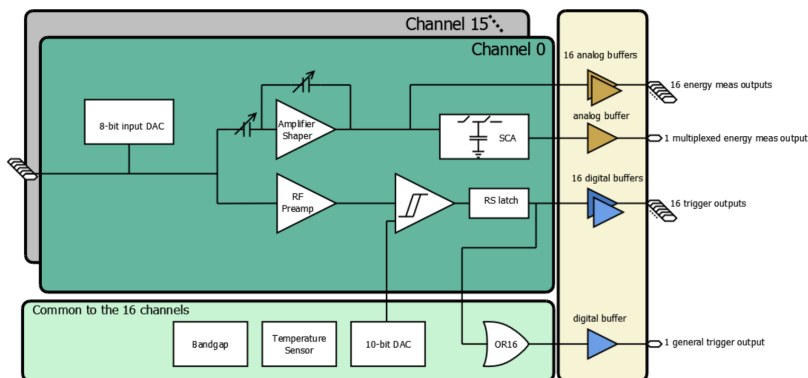


Figure 6. Block diagram of PETIROC front-end ASIC.



Figure 7. Picture of a strip board designed for a RE1/1 station using 16-channel PETIROC ASICs and 25 ns TDC.

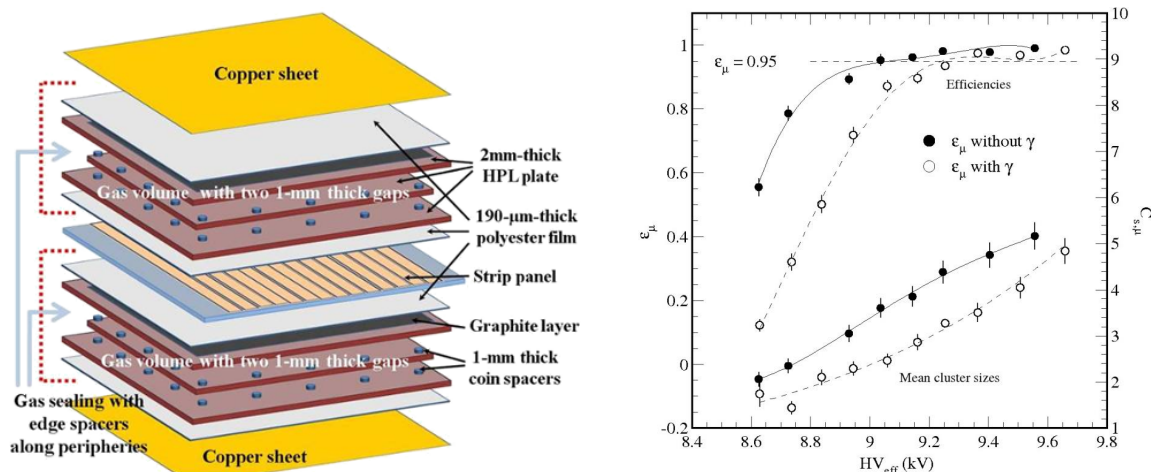


Figure 8. Left: view of a multigap HPL RPC prototype. Right: efficiency plateau and cluster size as function of operating voltage with (open symbols) and without (solid symbols) γ -irradiation at 3 kHz/cm^2 . The RPC under test was operated with 95.2% $\text{C}_2\text{H}_2\text{F}_4$ (R-134a), 4.5% $i\text{C}_4\text{H}_{10}$ (isobutane) and 0.3% SF_6 .

the CMS RPC with 2 mm electrodes and gas gaps, and the results obtained with and without γ -irradiation. Using the standard CMS front-end electronics, a shift of approximately 200 V towards higher voltages can be observed under 3 kHz/cm^2 irradiation rate per unit area.

Combining low resistivity electrodes with low noise electronics leads to the possibility to use single gap RPCs. Such a prototype, made out of LRS glass and using a similar front-end electronics as the PETIROC, called HARDROC, has been proposed and has only a limited efficiency drop compared to regular float glass for increasing particle rate per unit area [6], as shown in figure 9.

Finally, multigap prototypes made out of the same LRS glass have been made and will be tested at GIF++ using PETIROC. Such RPC designs gave very high timing precision using front-end electronics used for the STAR TOF prototype “TOFr” [16, 17].

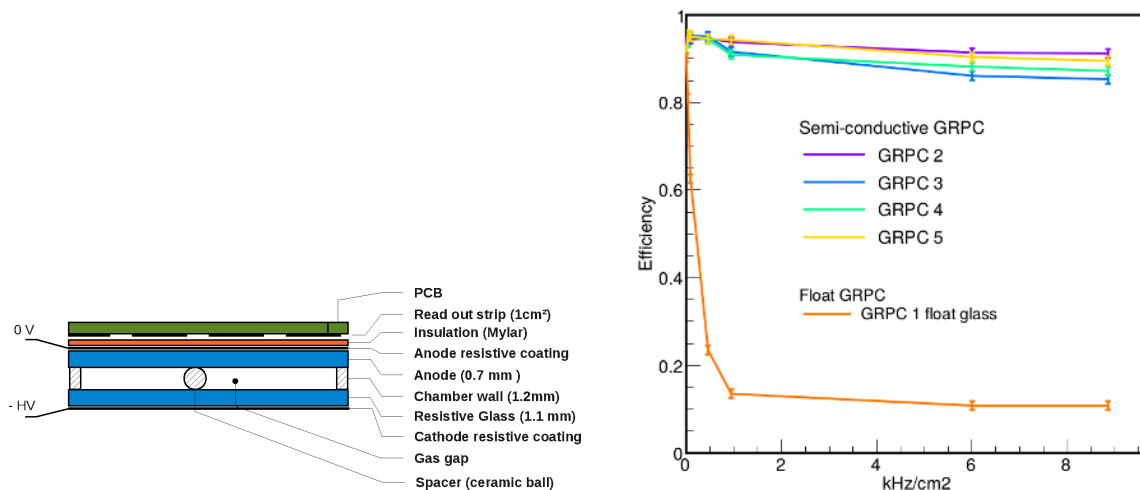


Figure 9. Left: schematic drawing of glass RPC (GRPC) with electrodes made of low resistive silicate glass or float glass. Right: efficiency as a function of the rate per unit area for different RPC. The orange line corresponds to the GRPC with float glass. The semi-conductive chambers are represented with different colors. GRPCs 2 to 5 have been built using the same electrode material and the same design. The GRPCs under test were operated with 93% C₂F₄ (TFE), 5% CO₂ and 2% SF₆.

4 Conclusion

In view of the HL-LHC, the CMS RPC group is designing and testing new RPC prototypes using new different electrode materials, geometries, or electronics. The final technique adopted for the next upgrade of the CMS Muon System may combine the benefits of the different approaches. Several options for new front-end electronics are being developed, and studies are ongoing to integrate the new electronics into the CMS Trigger and DAQ system. Ageing and rate capability tests of the new prototypes are ongoing at the CERN GIF++ irradiation facility.

CMS is anticipating the installation of two new RPC stations during the upcoming third LHC Long Shutdown.

Acknowledgments

Special thanks go to Jose Repond and Miguel Morales that provided a strong basis and the material needed to construct this general CMS RPC Upgrade report.

References

- [1] CMS collaboration, *The CMS muon project: Technical Design Report*, [CERN-LHCC-97-032](#) (1997) [CMS-TDR-3].
- [2] CMS collaboration, *Technical Proposal for the Phase-II Upgrade of the CMS Detector*, [CERN-LHCC-2015-010](#) (2015) [LHCC-P-008].
- [3] CMS collaboration, *Technical proposal*, [CERN-LHCC-94-38](#) (1994) [CERN-LHCC-P-1].

- [4] M. Abbrescia et al., *HF production in CMS-Resistive Plate Chambers*, *Nucl. Phys. B* **158** (2006) 30.
- [5] CMS collaboration, K.S. Lee, *Rate-capability study of a four-gap phenolic RPC with a ^{137}Cs source*, 2014 *JINST* **9** C08001.
- [6] Y. Haddad, G. Grenier, I. Laktineh, N. Lumb and S. Cauwenbergh, *High Rate Resistive Plate Chamber for LHC detector upgrades*, *Nucl. Instrum. Meth. A* **718** (2013) 424 [[arXiv:1211.5698](#)].
- [7] J. Wang et al., *Development of high-rate MRPCs for high resolution time-of-flight systems*, *Nucl. Instrum. Meth. A* **713** (2013) 40.
- [8] N. Johnson et al., *Electronically Conductive Vanadate Glasses for Resistive Plate Chamber Particle Detectors*, *Int. J. Appl. Glass Sci.* **6** (2015) 26.
- [9] A.L. Garcia et al., *Extreme high-rate capable timing resistive plate chambers with ceramic electrodes*, 2012 *JINST* **7** P10012.
- [10] M. Morales, C. Pecharroman, G. Mata-Osoro, L.A. Diaz and J.A. Garzon, *Conductivity and charge depletion aging of resistive electrodes for high rate RPCs*, 2013 *JINST* **8** P01022.
- [11] R. Cardarelli et al., *Performance of RPCs and diamond detectors using a new very fast low noise preamplifier*, 2013 *JINST* **8** P01003.
- [12] M. Abbrescia et al., *New developments on front end electronics for the CMS Resistive Plate Chambers*, *Nucl. Instrum. Meth. A* **456** (2000) 143.
- [13] J. Fleury et al., *Petiroc and Citiroc: front-end ASICs for SiPM read-out and ToF applications*, 2014 *JINST* **9** C01049.
- [14] M. Gouzevitch et al., *High rate, fast timing Glass RPC for the high η CMS muon detectors*, in press [*Nucl. Instrum. Meth. A* (2016)].
- [15] A. Blanco et al., *In-beam measurements of the HADES-TOF RPC wall*, *Nucl. Instrum. Meth. A* **602** (2009) 691.
- [16] J. Wang et al., *Development of multi-gap resistive plate chambers with low-resistive silicate glass electrodes for operation at high particle fluxes and large transported charges*, *Nucl. Instrum. Meth. A* **621** (2010) 151.
- [17] W.J. Llope et al., *Simple Front End Electronics for Multigap Resistive Plate Chambers*, *Nucl. Instrum. Meth. A* **596** (2008) 430 [[arXiv:0807.3016](#)].